

- 1 Sepulveda Dam
- 2 Hansen Dam
- 3 Whittier Narrows Dam
- 4 Santa Fe Dam
- 5 Brea Dam
- 6 Fullerton Dam
- 7 Carbon Canyon Dam
- 8 San Antonio Dam
- 9 Prado Dam

Legend

- Basin Boundaries
- Basin Rivers & Tributaries
- Watersheds
- Cities

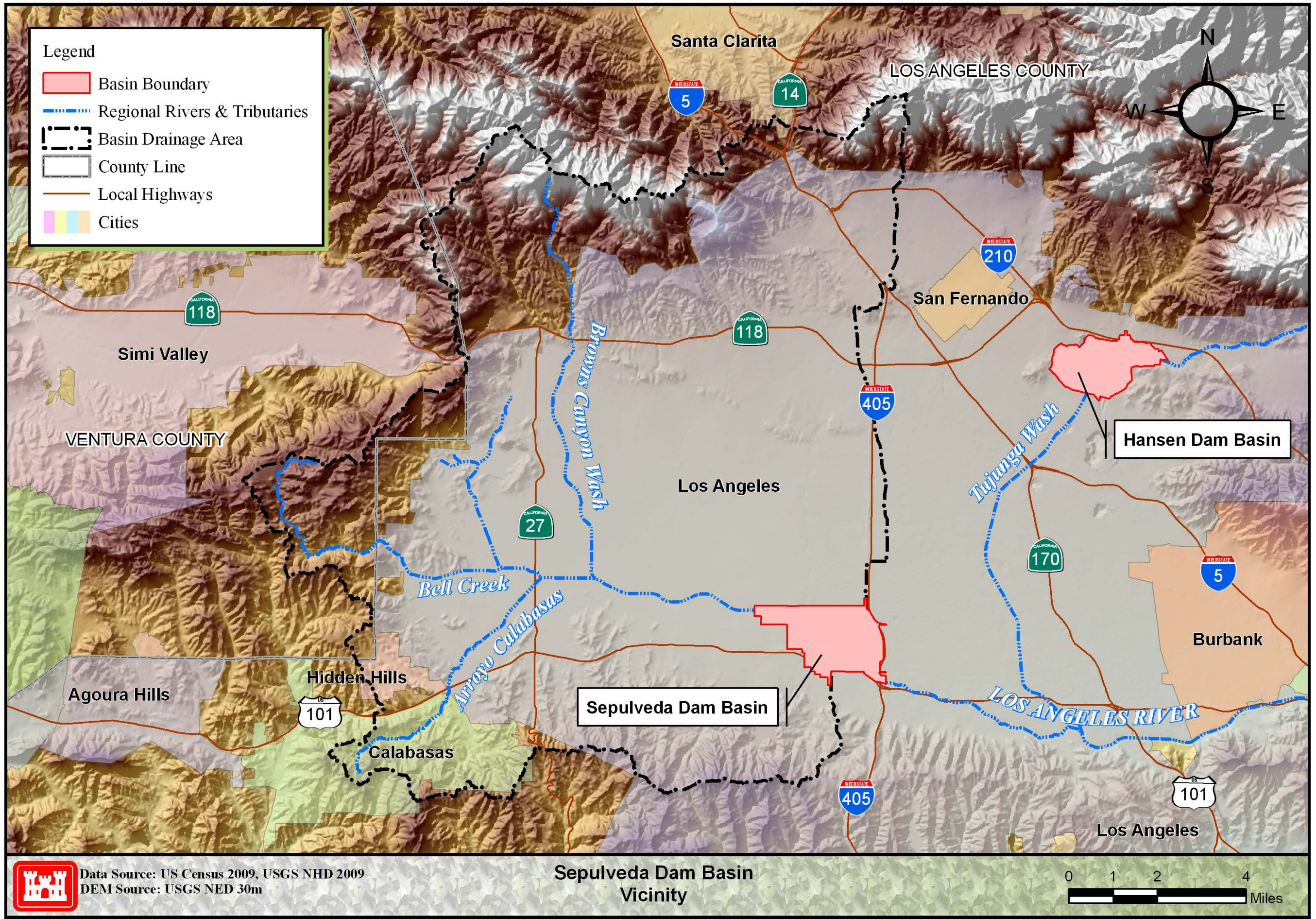


Data Source: USGS NHD 2009, US Census 2009
 DEM Source: USGS NED 30m

**Sepulveda Dam Basin
 Regional Setting**

0 3 6 12
 Miles

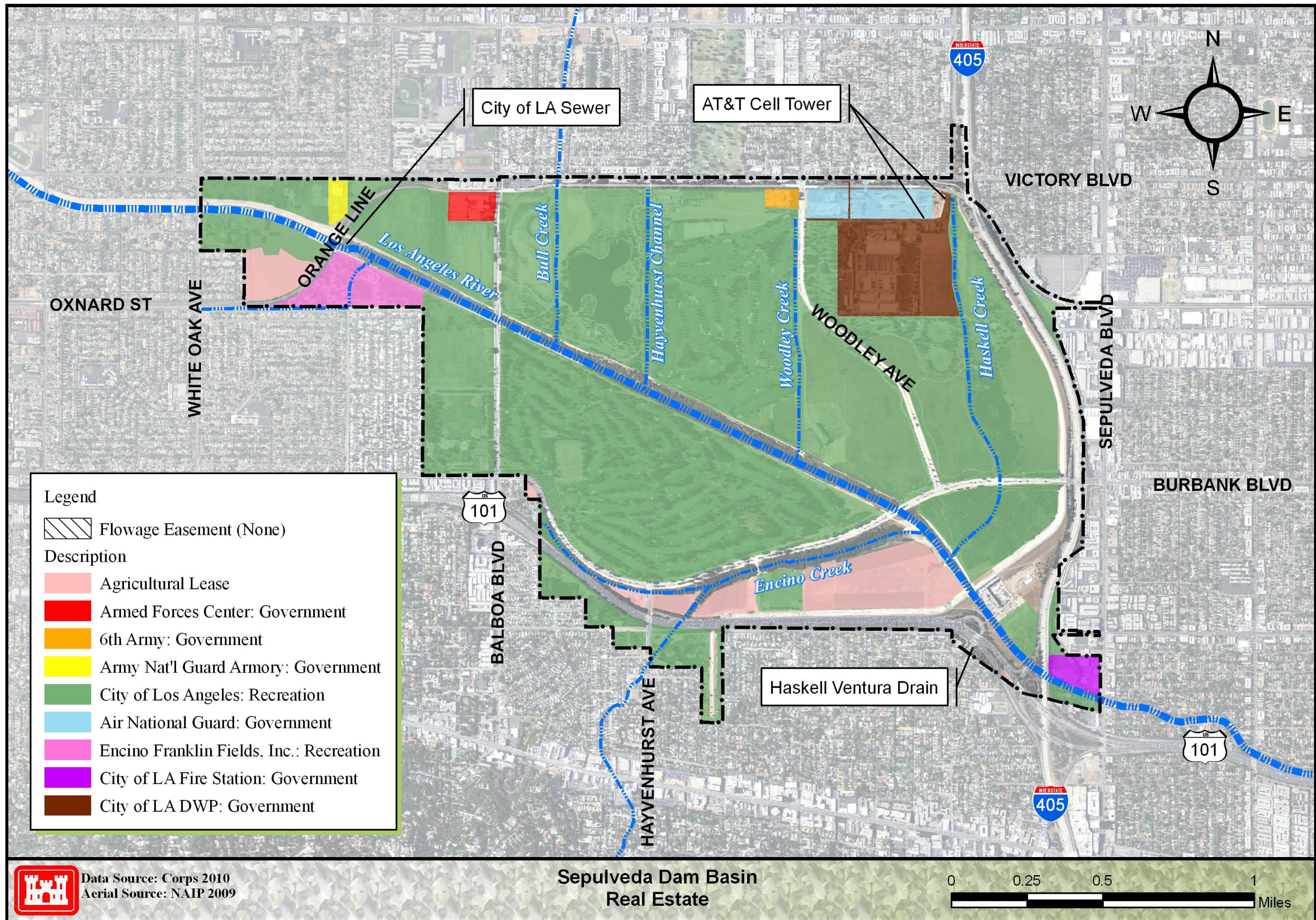
Map 1 Regional Setting



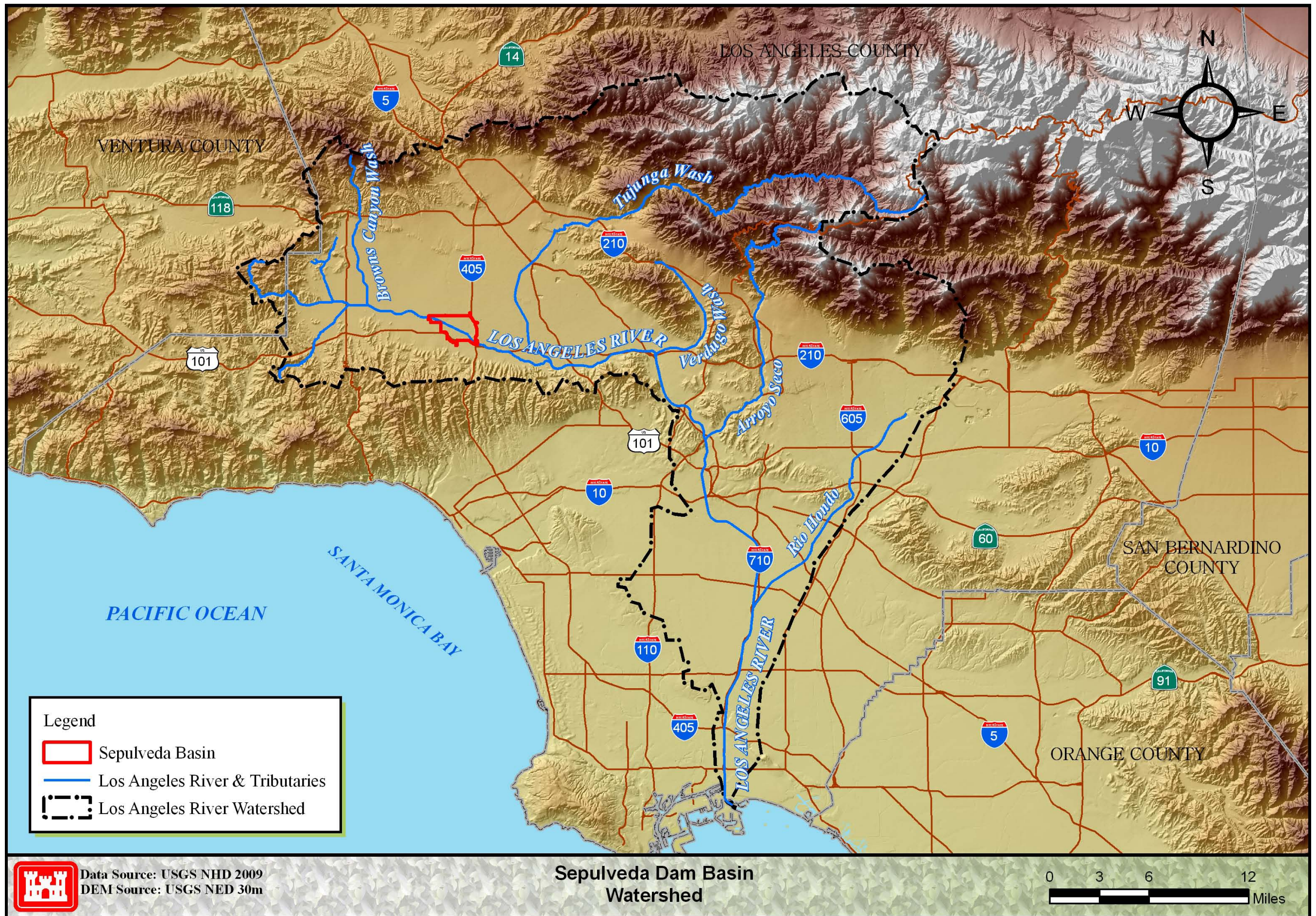
Map 2 Vicinity



Map 3 Project Location



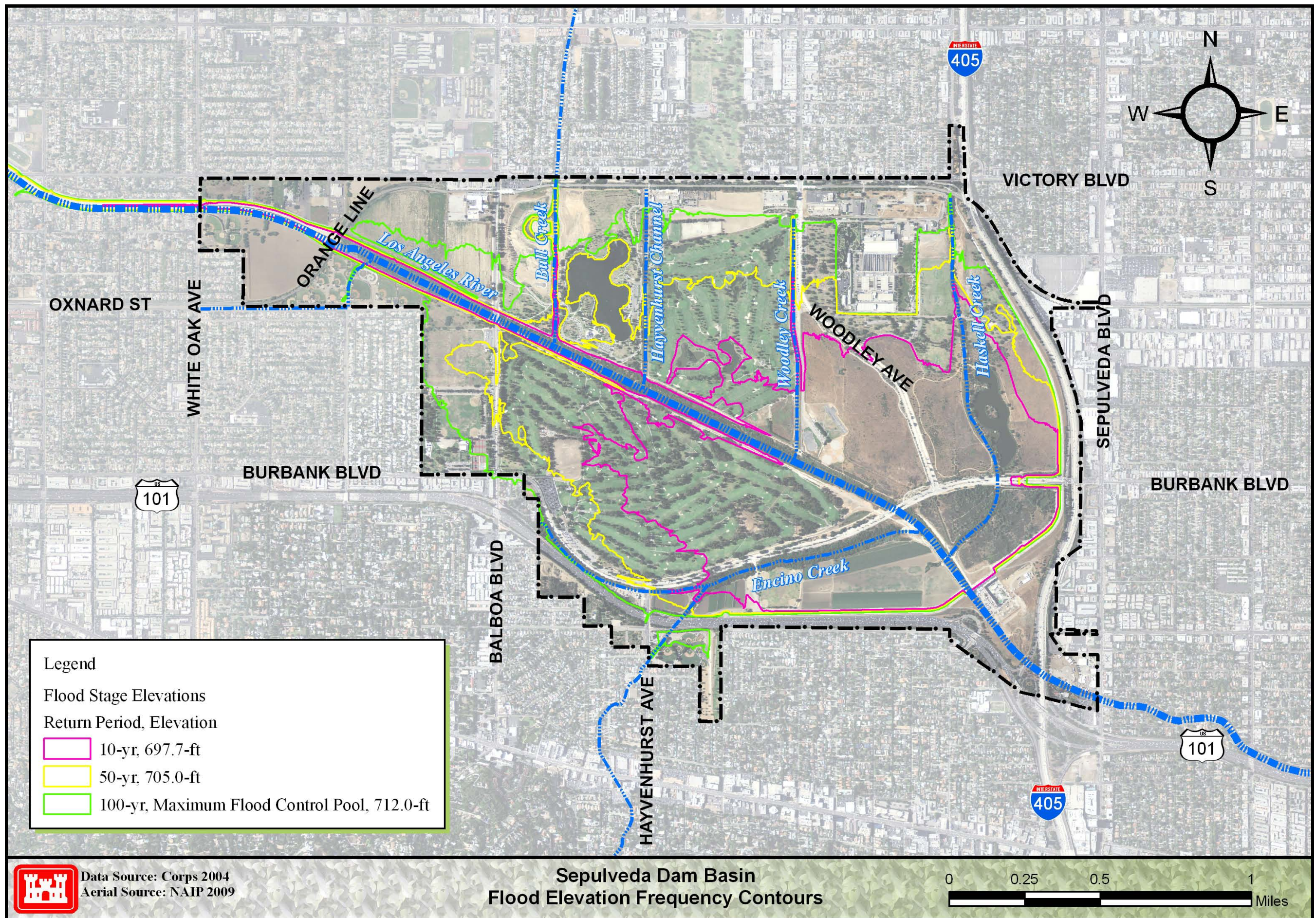
Map 4 Real Estate



Map 5 Watershed



Map 6 Open Space



Map 7 Flood Elevation Frequency Contours

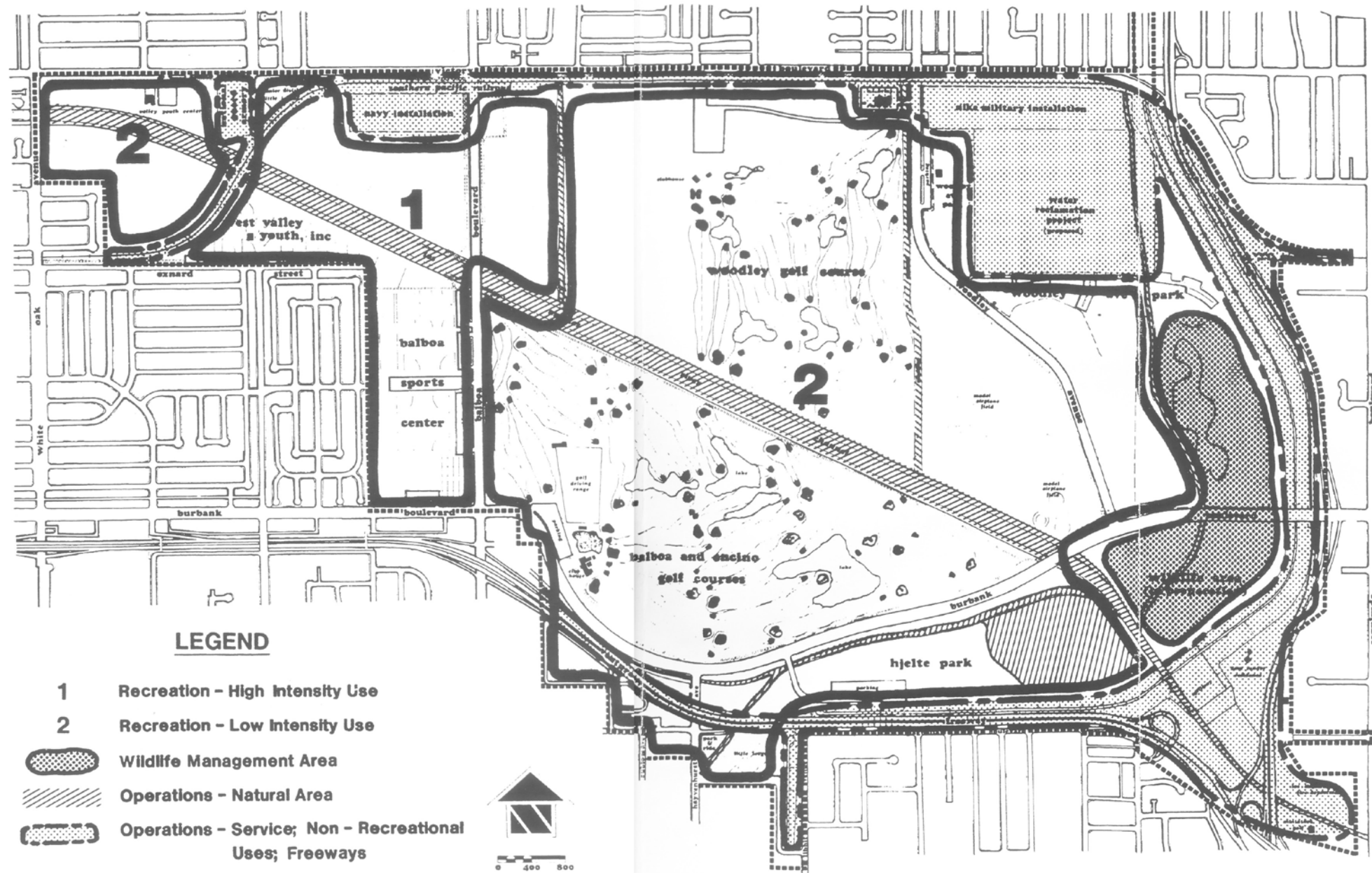


FIGURE 11
GENERALIZED SEPULVEDA BASIN LAND USE MAP

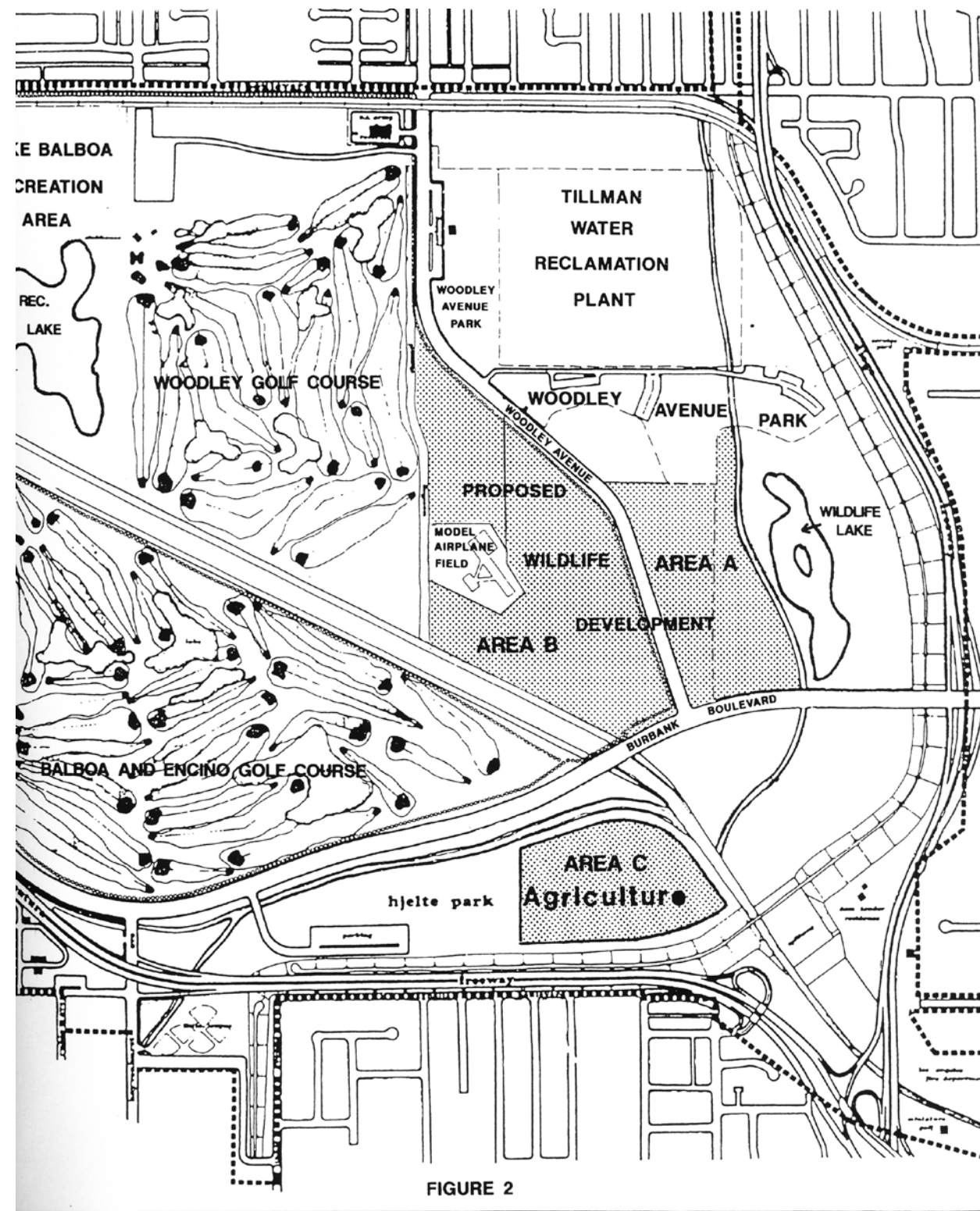


FIGURE 2

SEPULVEDA BASIN
PROPOSED WILDLIFE DEVELOPMENT AREA

SEPULVEDA FLOOD CONTROL BASIN
 SUPPLEMENT NO. 1 TO THE 1981 MASTER PLAN

- Land Use Change:
- Area A.** High Intensity Recreation (Sportsfields) to Low Intensity Recreation
 - Area B.** Undetermined to Low Intensity Recreation (Wildlife Area and Trails)
 - Area C.** Dam Operations/Natural Area to Dam Operations/Wildlife Area

1. GENERAL.

1.01 Purpose. Areas A, B, and C, the subject of this Supplement, are currently under lease to the City of Los Angeles for recreation and parks purposes. Areas A and B are currently under agricultural lease as an interim use. (See Plate 1, Vicinity Map, Plate 2, Existing Sepulveda Master Plan, and Plate 3, Revised Master Plan.)

1.02 The Master Plan, dated 1981, and the Feature Design Memorandum (FDM), dated 1987, are intended as guides for the orderly and coordinated development and management of all land and water resources within the Sepulveda Flood Control Basin. The Master Plan takes into consideration available land, water, and other resources and provides the best possible use of reservoir land with respect to cost, future demand and carrying capacity.

1.03 To accommodate changing needs and conditions, the Master Plan is designed to be updated or revised as needed. The basis for the current Supplement is to develop a wildlife area with trails northeast of the intersection of Burbank Boulevard and Woodley Avenue (identified in this supplement as Area A) and the area northwest of the intersection of Burbank Boulevard and Woodley Avenue (identified in this Supplement as Area B). These two wildlife areas would provide habitat for a variety of migratory waterfowl, resident species, and other wildlife. Trails in these areas would also provide hiking and bird-watching opportunities as well as educational benefits. In addition, this Supplement includes changing the designation of the area south of Burbank Boulevard, east of Hjelte Park, on the west side of the Los Angeles River (identified in this Supplement as Area C) from Dam Operations/Natural Area to Dam Operations/Wildlife Area to provide a buffer between wildlife areas and Hjelte Park and provide the opportunity to use the area for agricultural/wildlife forage. (See Plate 4.)



Legend

Basin Facilities

Amenities

- Lodge, Pro-Shop, or Rentals
- Community Center
- P Parking
- S Shelter
- P Playground
- R Restroom

Trails: Paved | Uses

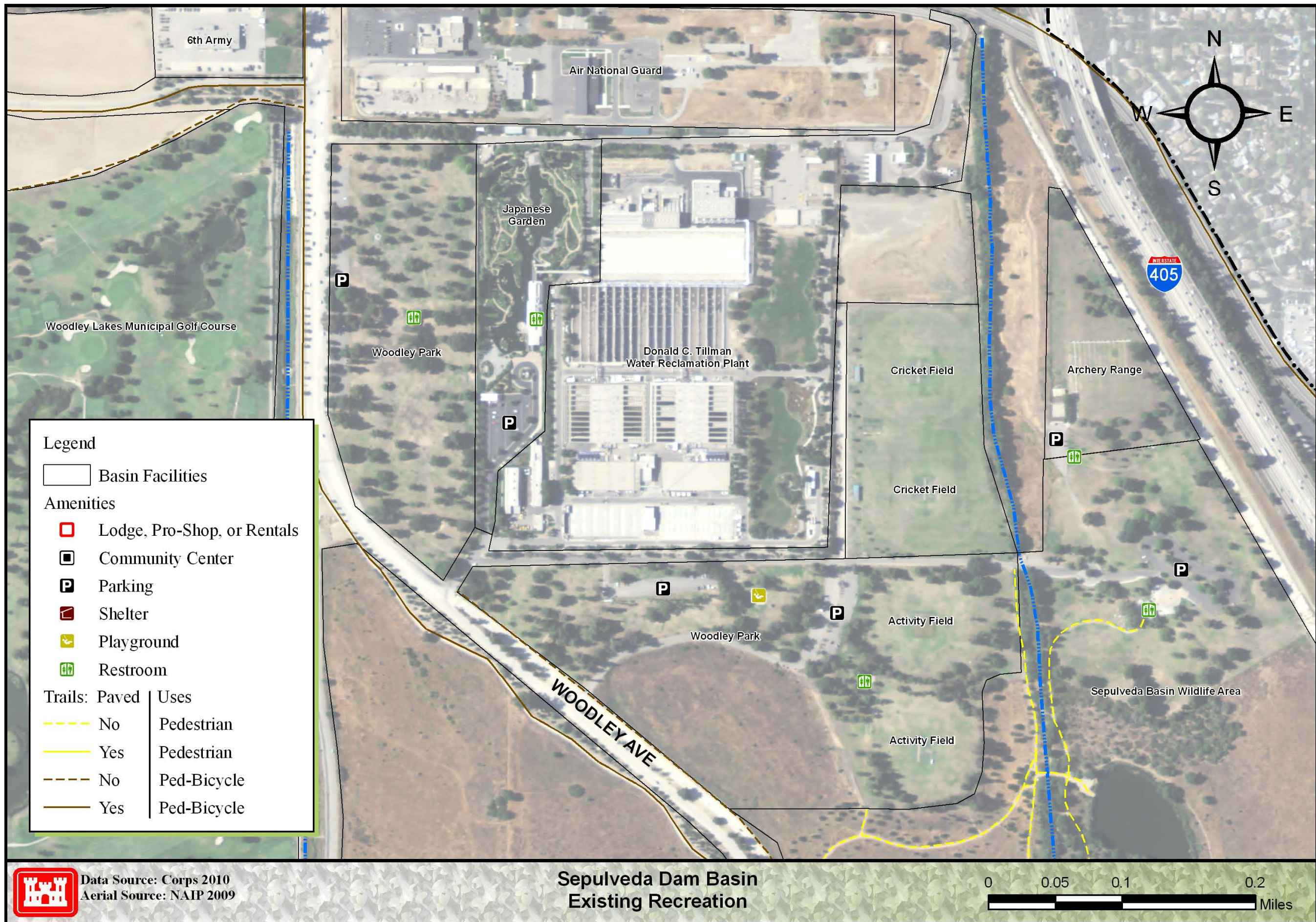
<ul style="list-style-type: none"> No Yes No Yes 	<ul style="list-style-type: none"> Pedestrian Pedestrian Ped-Bicycle Ped-Bicycle
--	--

Data Source: Corps 2010
Aerial Source: NAIP 2009

**Sepulveda Dam Basin
Existing Recreation**



Map 10 Existing Recreation



 Data Source: Corps 2010
Aerial Source: NAIP 2009

**Sepulveda Dam Basin
Existing Recreation**

Map 11 Woodley Park, Cricket Fields, Archery Range



Legend

Basin Facilities

Amenities

- Lodge, Pro-Shop, or Rentals
- Community Center
- Parking
- Shelter
- Playground
- Restroom

Trails:

Paved	Uses
No	Pedestrian
Yes	Pedestrian
No	Ped-Bicycle
Yes	Ped-Bicycle

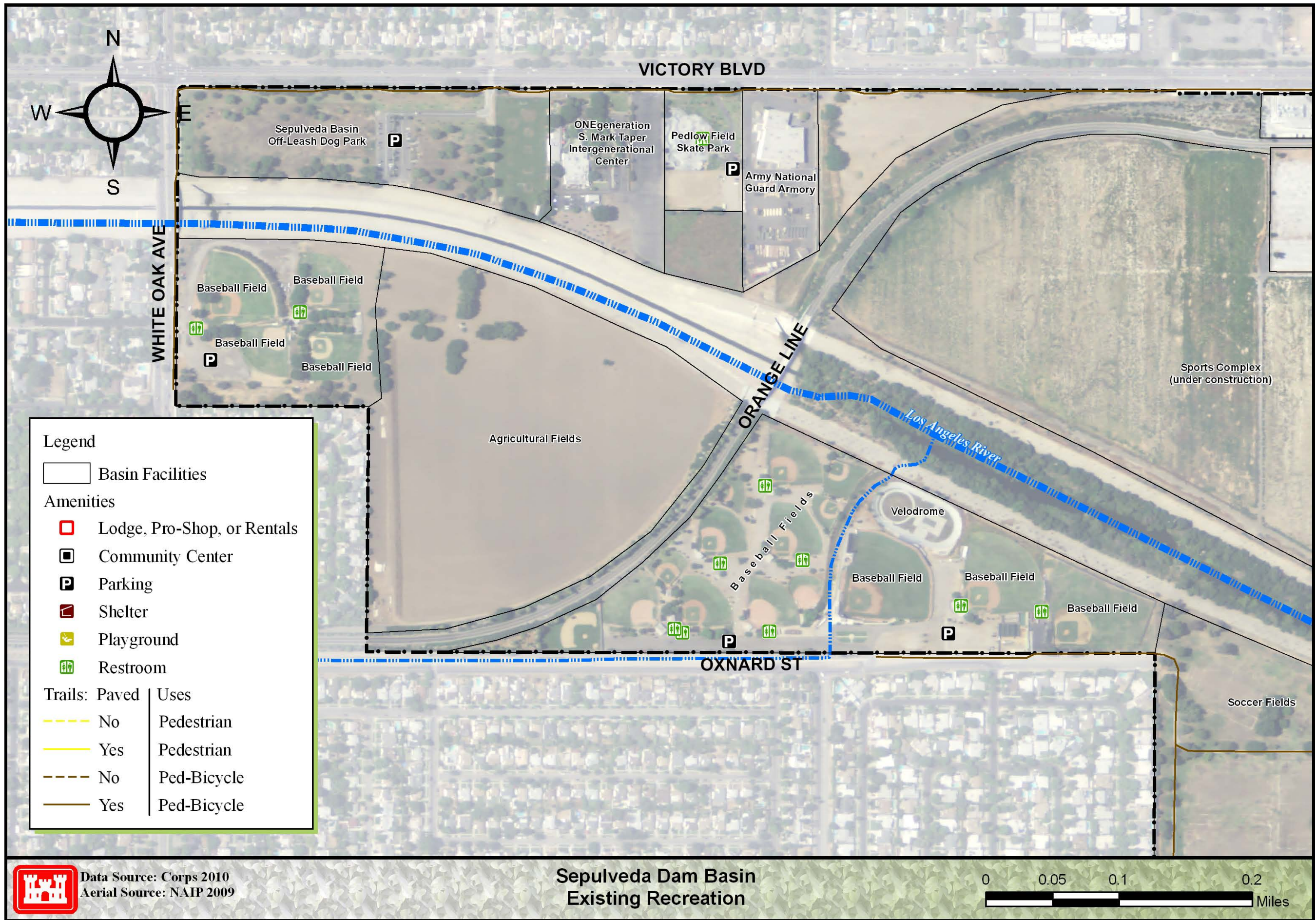


Data Source: Corps 2010
Aerial Source: NAIP 2009

**Sepulveda Dam Basin
Existing Recreation**



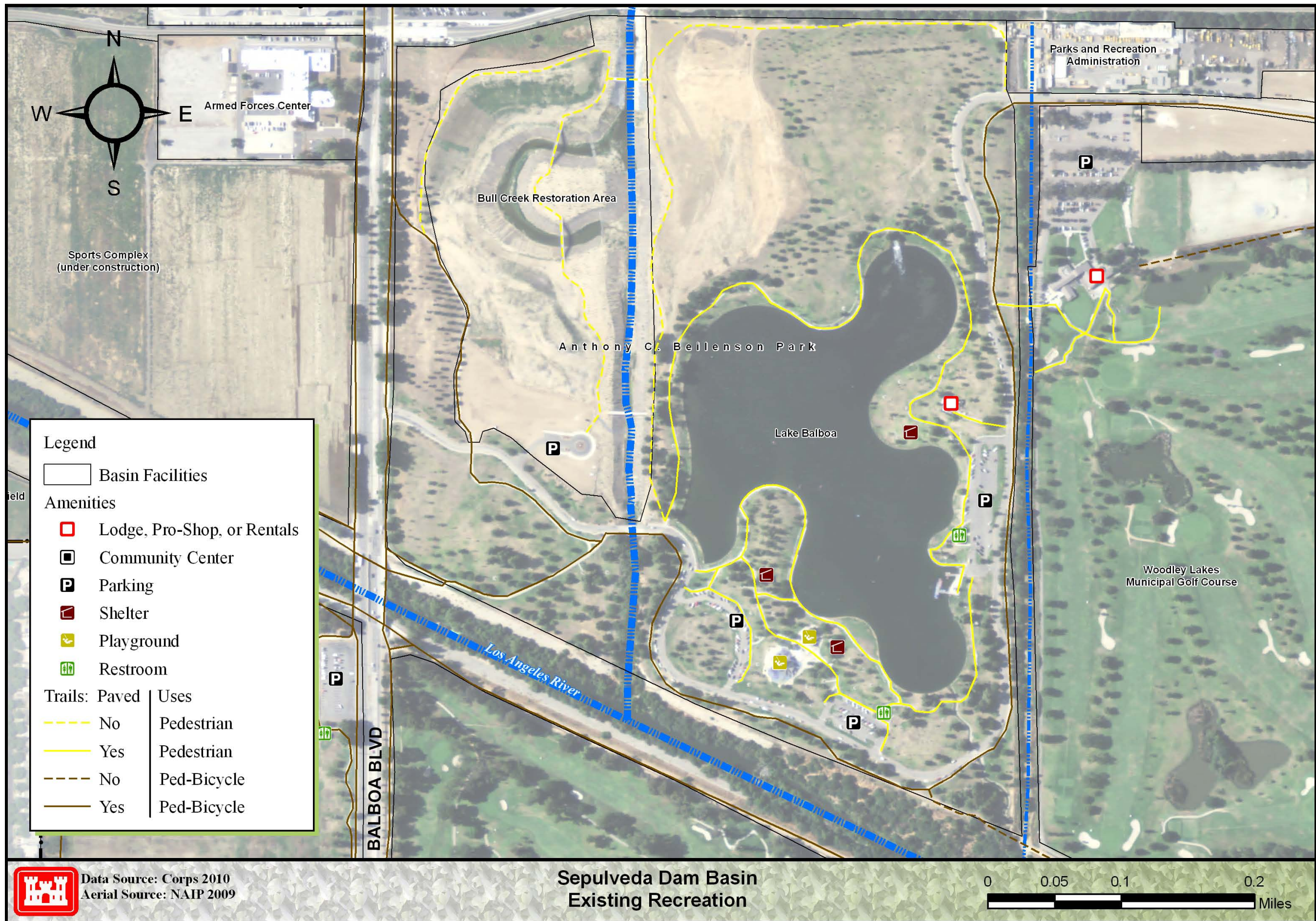
Map 12 Balboa Sports Complex



Data Source: Corps 2010
Aerial Source: NAIP 2009

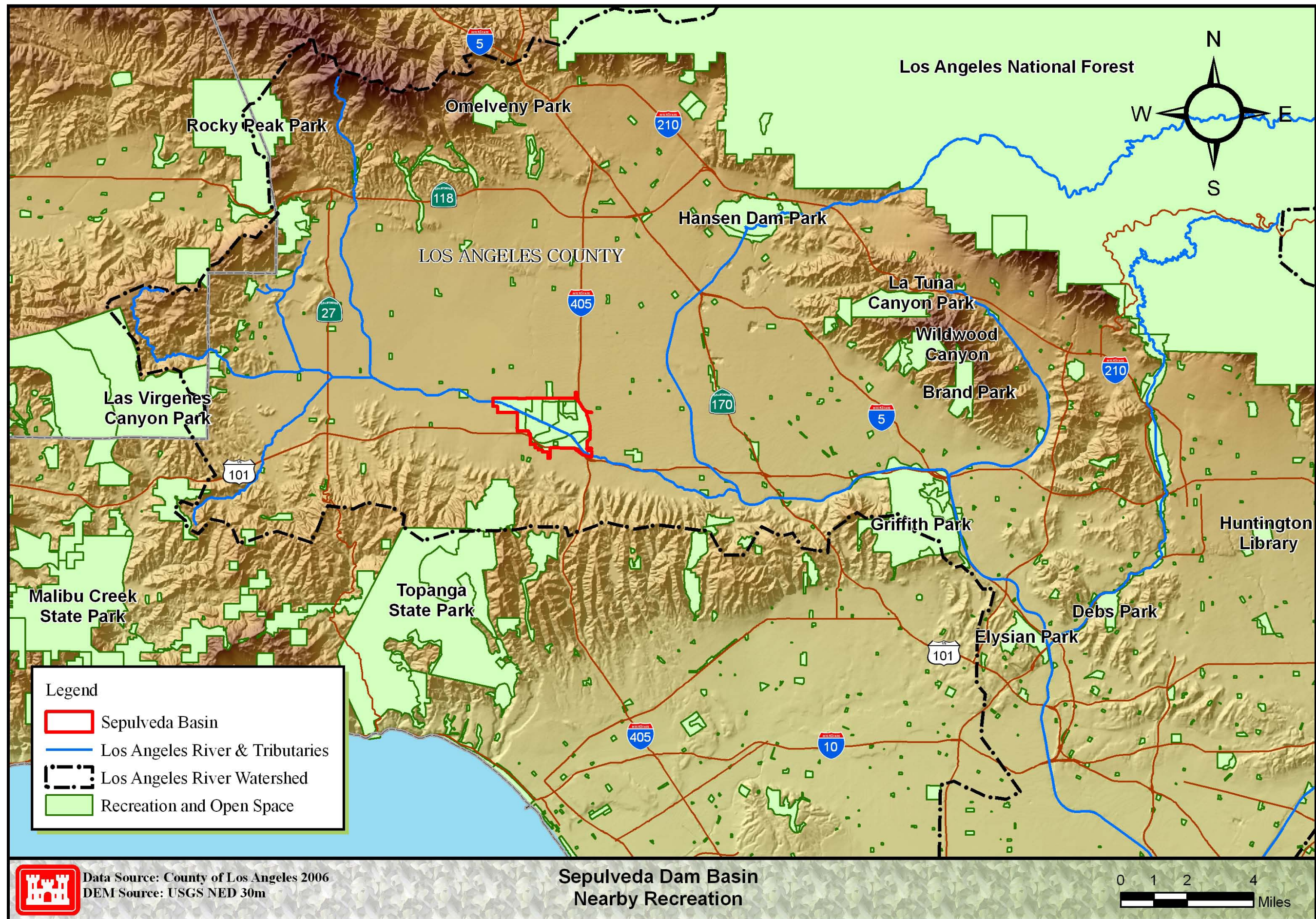
**Sepulveda Dam Basin
Existing Recreation**

Map 13 Northwest Sepulveda Facilities



**Sepulveda Dam Basin
Existing Recreation**

Map 14 Anthony C. Beilenson Park

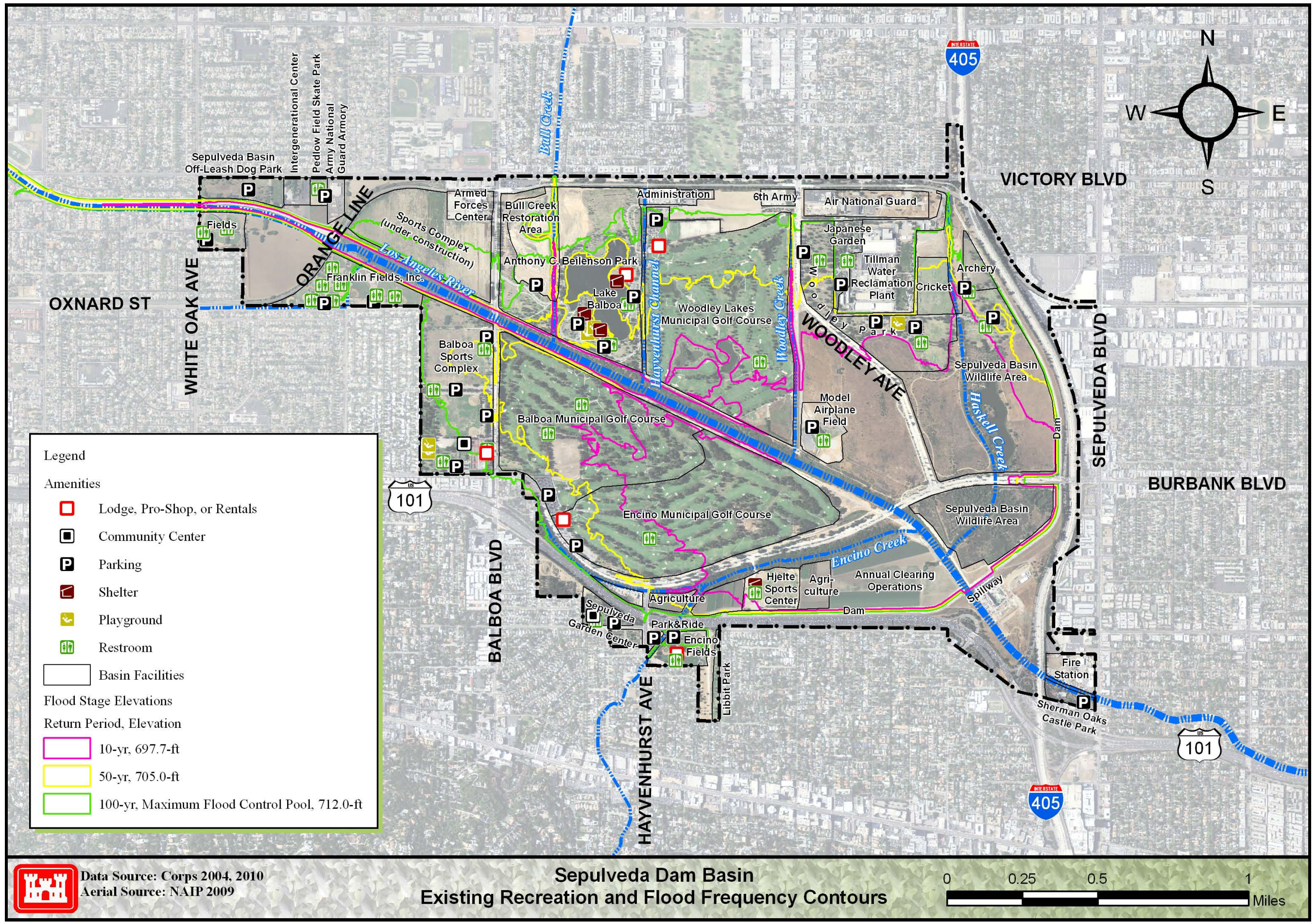


Data Source: County of Los Angeles 2006
 DEM Source: USGS NED 30m

**Sepulveda Dam Basin
 Nearby Recreation**

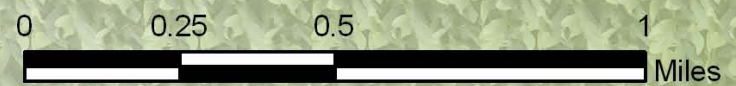
0 1 2 4
 Miles

Map 15 Nearby Recreation

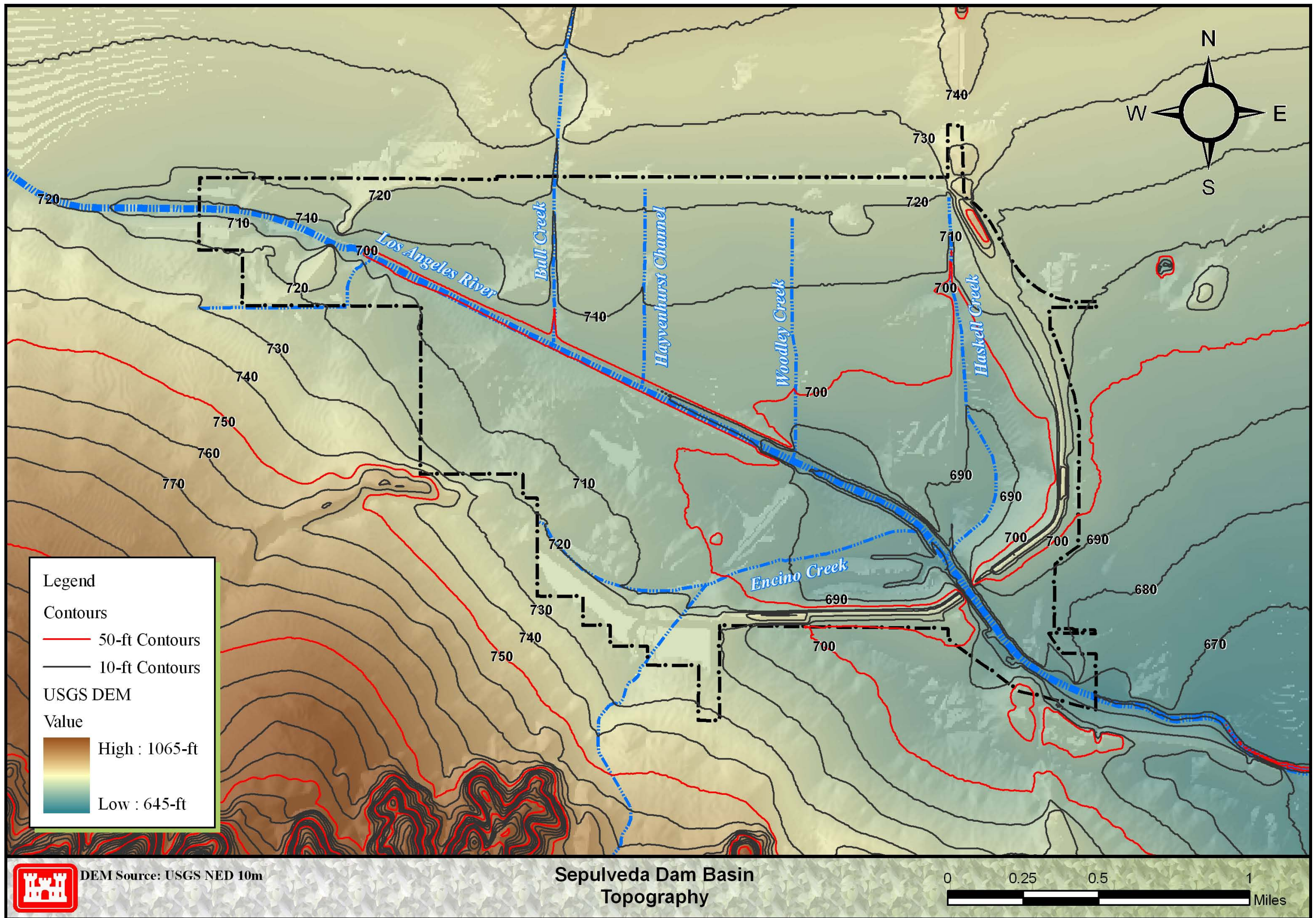


Data Source: Corps 2004, 2010
Aerial Source: NAIP 2009

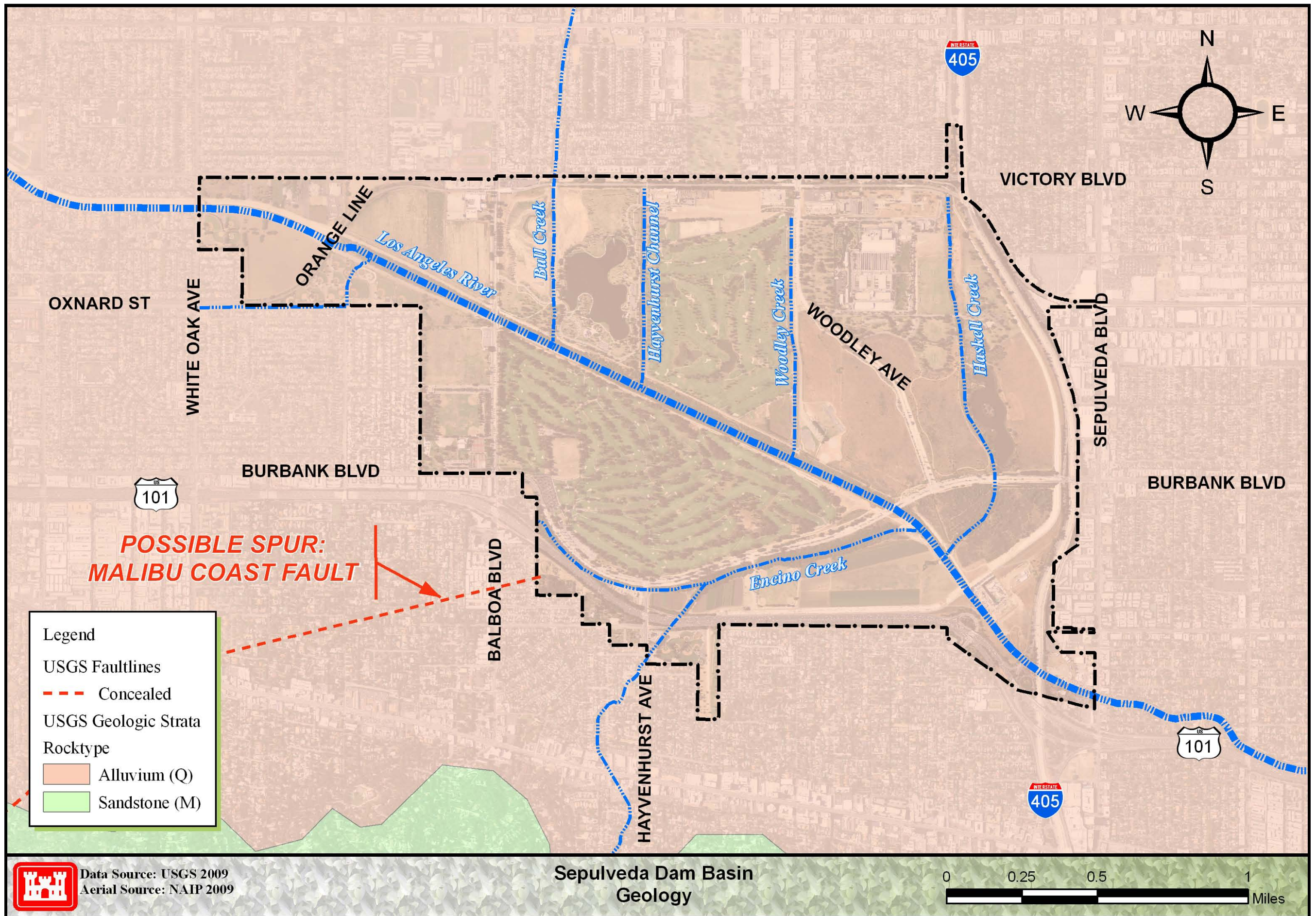
Sepulveda Dam Basin
Existing Recreation and Flood Frequency Contours



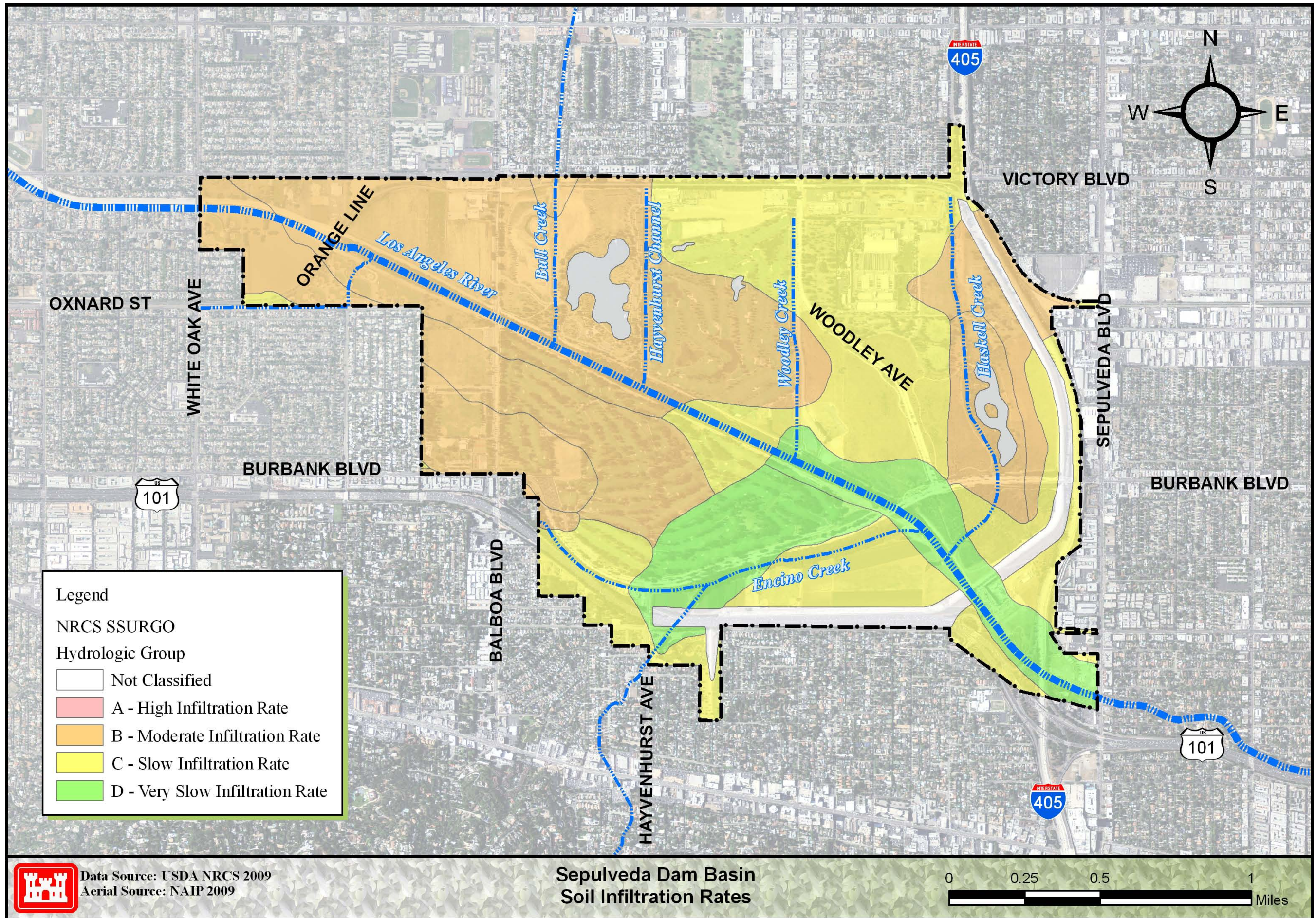
Map 16 Existing Recreation and Flood Frequency Contours



Map 17 Topography

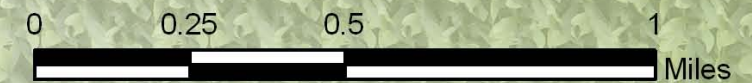


Map 18 Geology

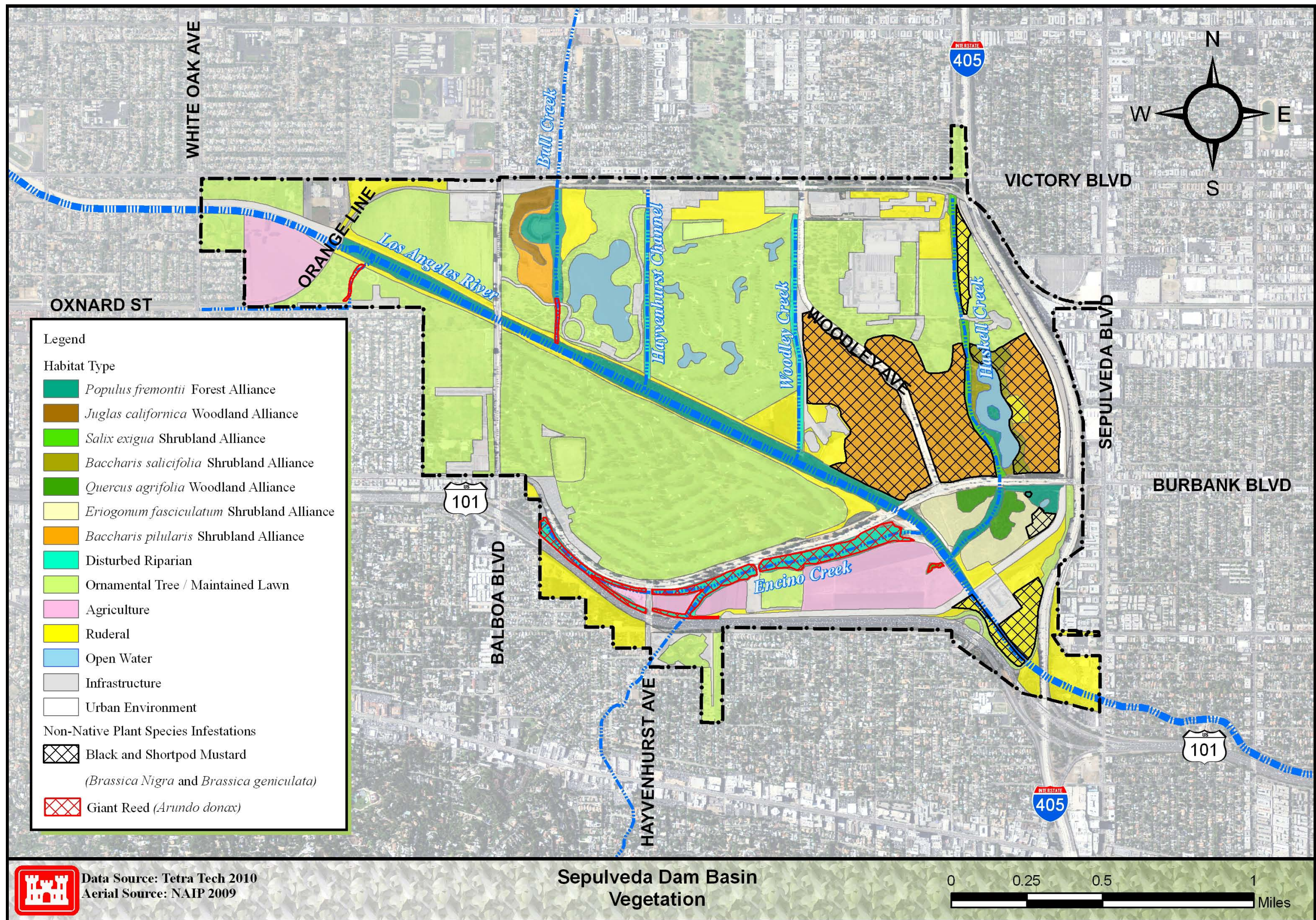


Data Source: USDA NRCS 2009
Aerial Source: NAIP 2009

**Sepulveda Dam Basin
Soil Infiltration Rates**



Map 19 Soil Infiltration Rates



Data Source: Tetra Tech 2010
 Aerial Source: NAIP 2009

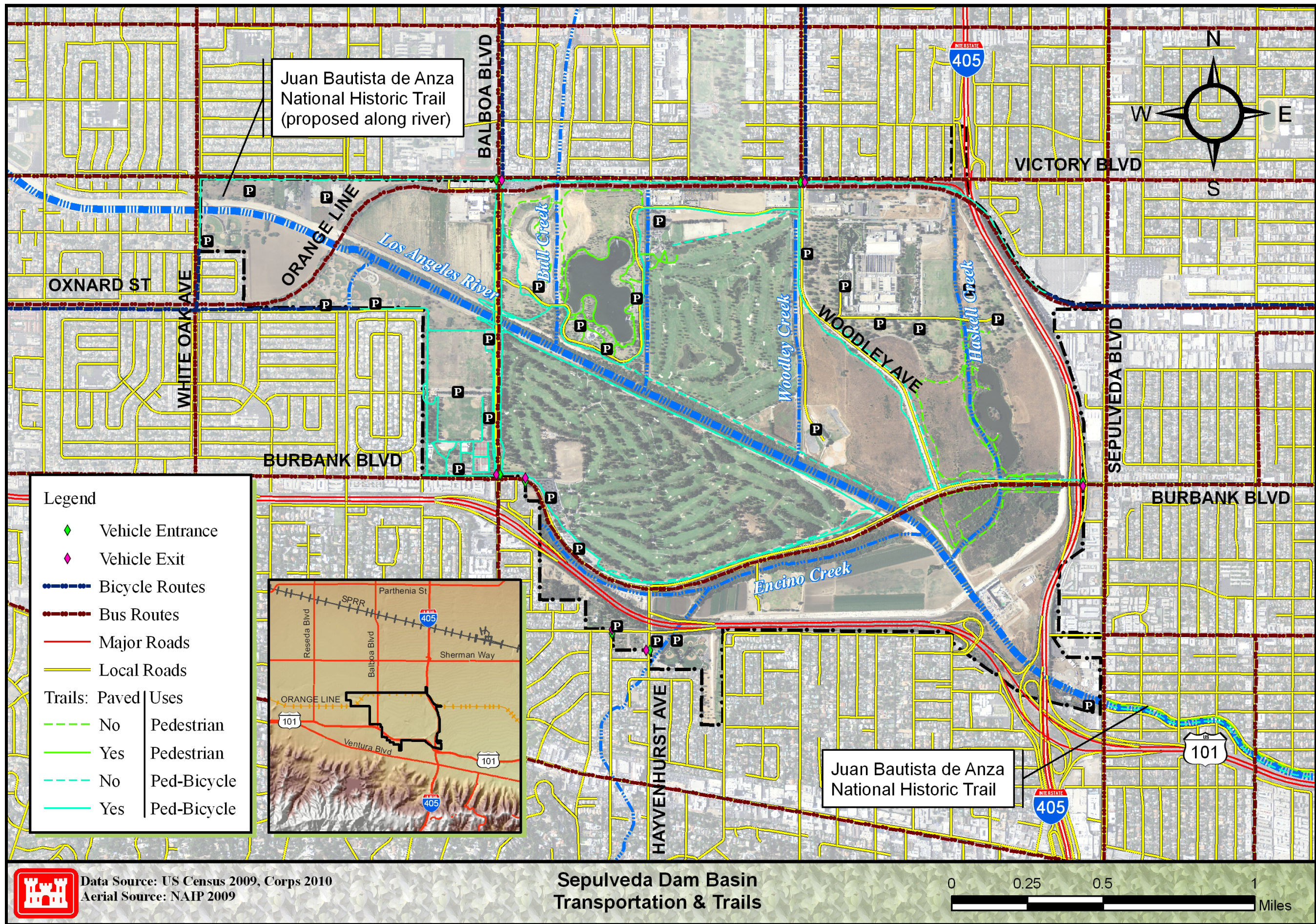
Sepulveda Dam Basin
 Vegetation



Data Source: USFWS 2009, CNDDDB 2009
 Aerial Source: NAIP 2009

**Sepulveda Dam Basin
 Special Status Taxa Occurrences**

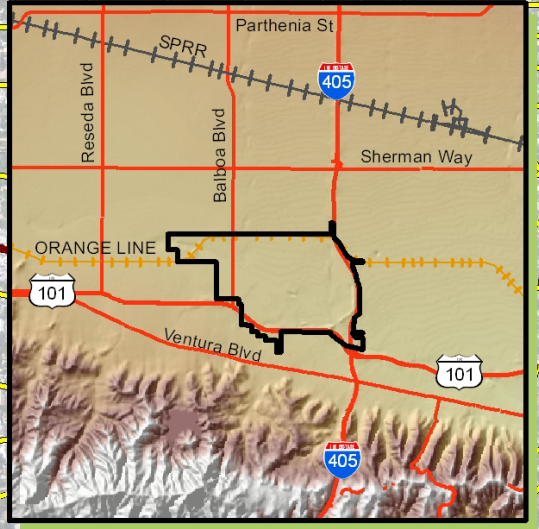
Map 21 Special Status Taxa Occurrences



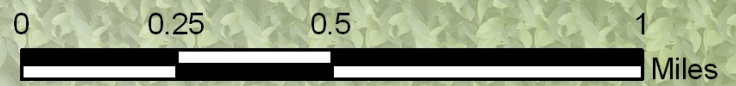
Juan Bautista de Anza National Historic Trail (proposed along river)

Juan Bautista de Anza National Historic Trail

- Legend**
- ◆ Vehicle Entrance
 - ◇ Vehicle Exit
 - Bicycle Routes
 - Bus Routes
 - Major Roads
 - Local Roads
- | Trails: Paved | | Uses |
|---------------|-------|-------------|
| — | — | Pedestrian |
| — | — | Pedestrian |
| - - - | - - - | Ped-Bicycle |
| - - - | - - - | Ped-Bicycle |

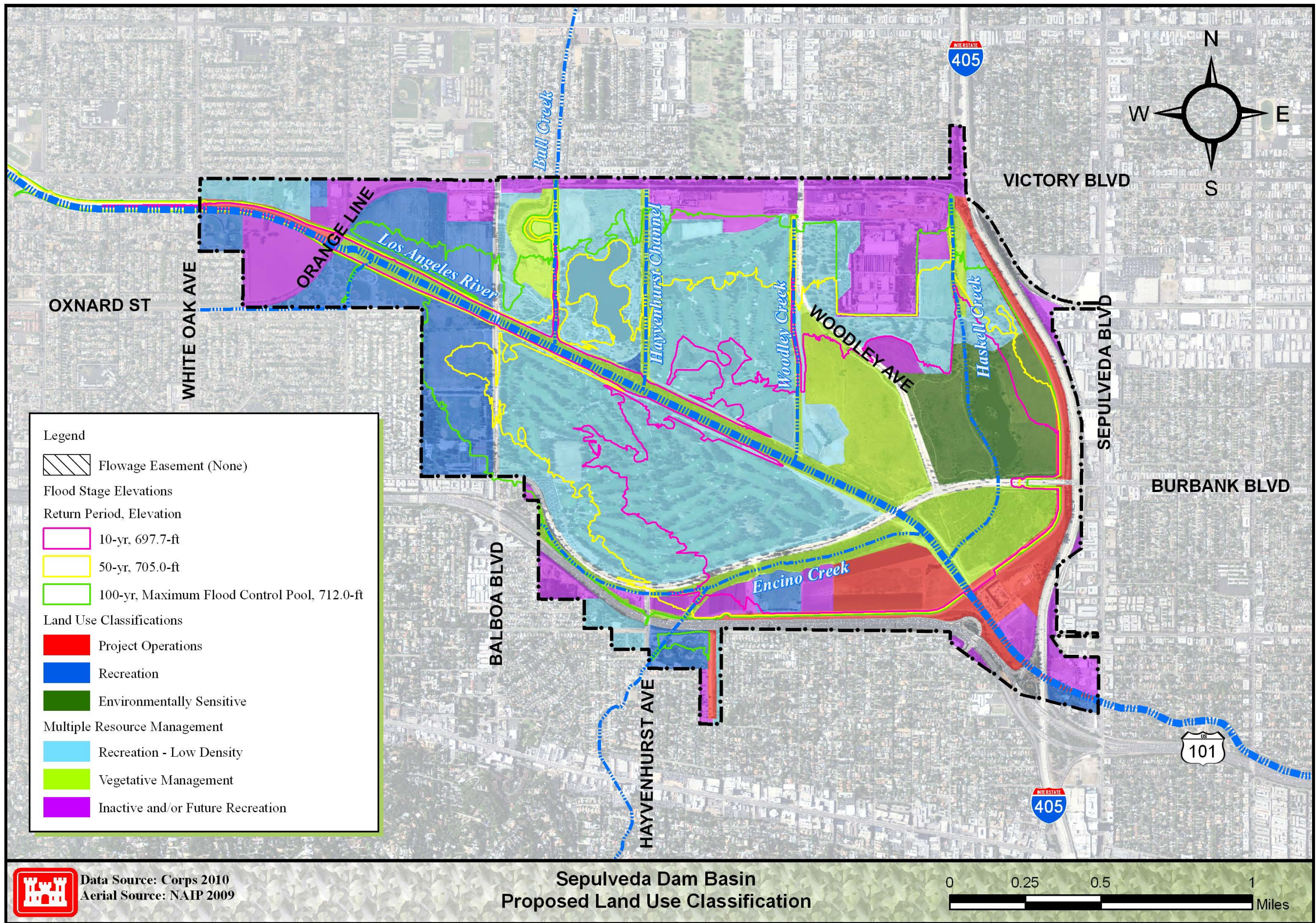


Sepulveda Dam Basin Transportation & Trails



Data Source: US Census 2009, Corps 2010
Aerial Source: NAIP 2009

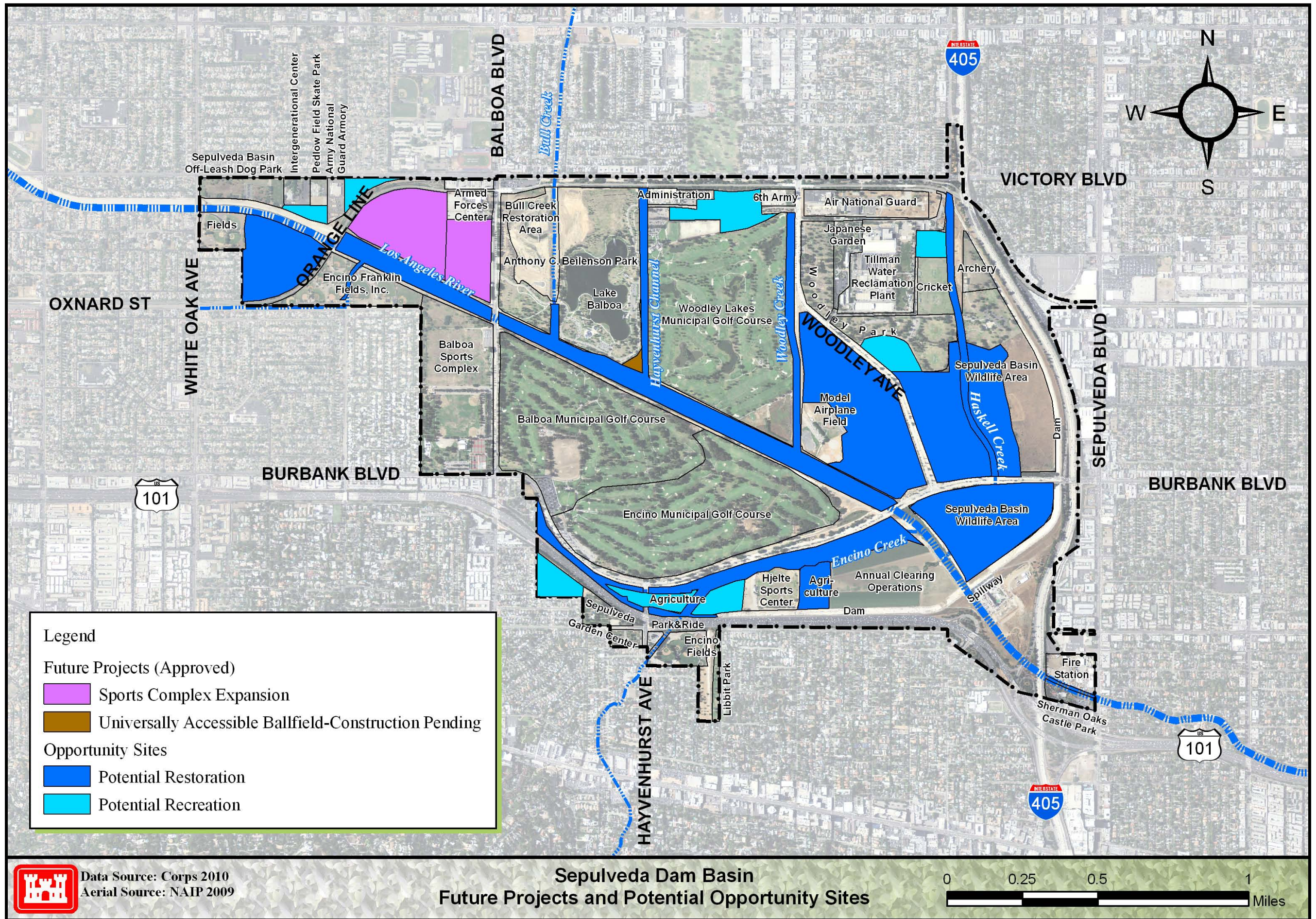
Map 22 Transportation and Trails



Data Source: Corps 2010
Aerial Source: NAIP 2009

**Sepulveda Dam Basin
Proposed Land Use Classification**

Map 23 Proposed Land Use Classification



Legend

Future Projects (Approved)

- Sports Complex Expansion
- Universally Accessible Ballfield-Construction Pending

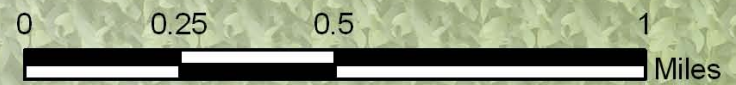
Opportunity Sites

- Potential Restoration
- Potential Recreation



Data Source: Corps 2010
 Aerial Source: NAIP 2009




**Sepulveda Dam Basin
 Future Projects and Potential Opportunity Sites**



Map 24 Future Projects and Potential Opportunity Sites



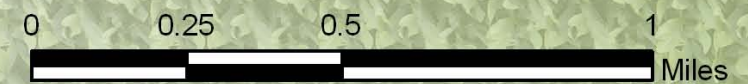
Legend

-  Native Habitat: California Grassland
-  Native Habitat: Riparian
-  Native Habitat: Upland

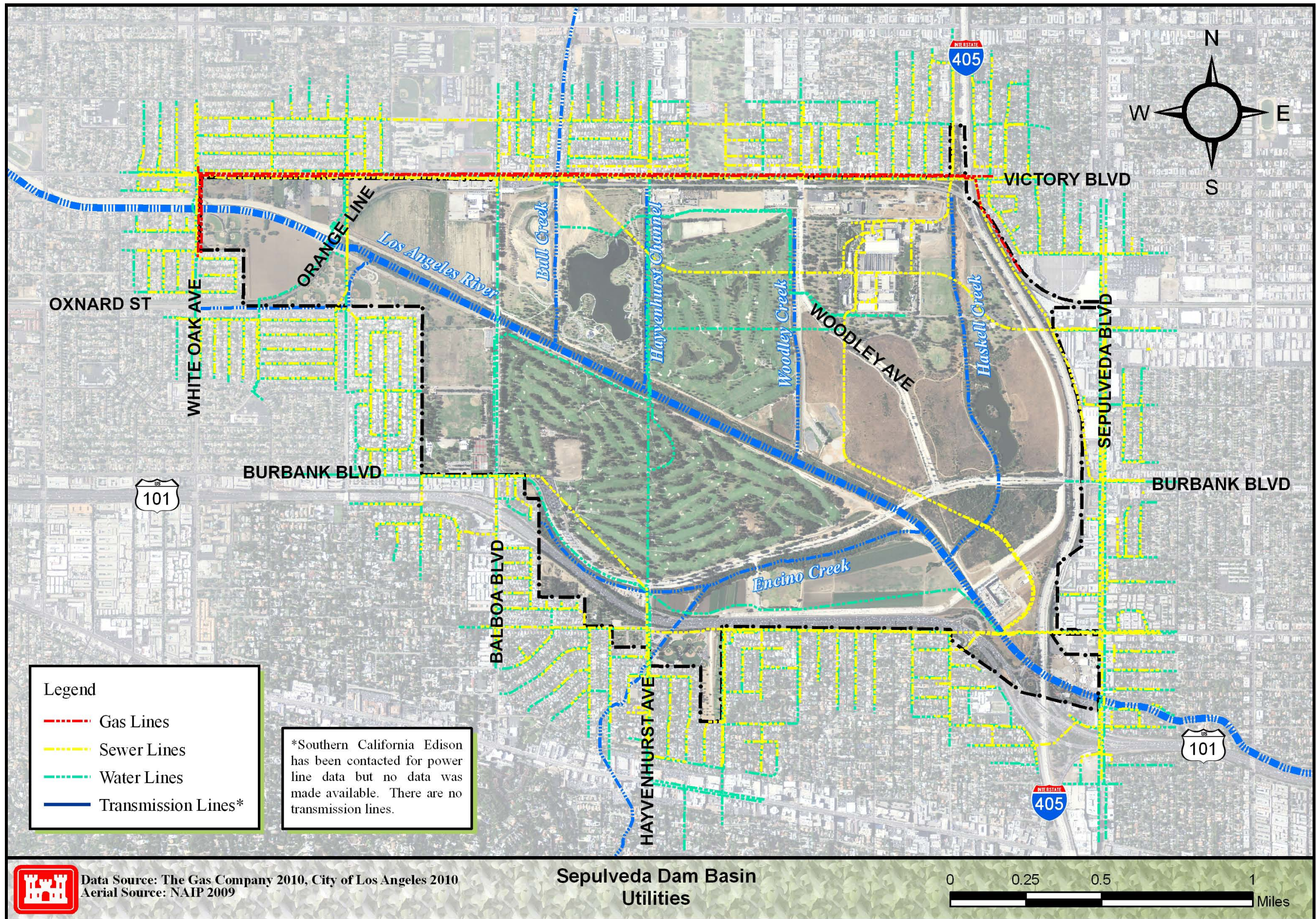


Data Source: Corps 2010
Aerial Source: NAIP 2009

**Sepulveda Dam Basin
Restoration Opportunities**



Map 25 Restoration Opportunities



Data Source: The Gas Company 2010, City of Los Angeles 2010
 Aerial Source: NAIP 2009

**Sepulveda Dam Basin
 Utilities**

Map 26 Utilities

