

## **Report on Non-Native Plants Along the Orange Line Busway in the Sepulveda Basin** By Steven Hartman 3-22-2011

**Background:** When the MTA met with the landscape advisory committee for the Orange Line busway, it was promised that all the plants in the Sepulveda Basin would be natives, with the exception of any vines. This is based on a long-standing if perhaps informal policy by the City of Recreation and Parks that native plants be used primarily in the Sepulveda Dam Basin. MTA pretty much met the commitment, with the exception being the non-native sea-lavender (*Limonium perezii*); the native *Limonium californicum* is a coastal species and would likely not do well in the valley.

It has now been a few years since the Orange Line was finished, and I have noticed, while taking the bus and by driving along Victory Blvd. that certain non-native plants were beginning to be noticeable. In late February 2011, Steve Hartman, Kerri Barton, Derrel Barton, and Anne Abramson surveyed the vegetation along the busway along Victory Blvd. between the 405 Freeway and Balboa Blvd. Later that same day, Steve drove to the vacant lot east of Balboa Blvd. formed by the southward turn in the busway where it crosses the LA River.

**Survey:** Using Google Earth maps, I printed out detailed images of short stretches of the Busway along Victory Blvd. on 2/3 of a letter size paper, leaving 1/3 white so we could record the non-native plant species where we found them. The scale was large enough so that individual plants could be identified and circled. The pages were labeled 1-10, going from east (at the Freeway) to west (to Balboa Blvd.). Two additional pages labeled L and R show the large field east of Balboa. Below, the non-native species are listed by page, with street designations noted. See the pdf showing the images for details and numbers of plants.

1. **between Freeway on ramp and driveway crossing/Densmore:** elm, Pennisetum, evergreen ash, Peruvian pepper, ailanthus forest, Russian thistle, eucalyptus forest, palm trees, pine tree seedlings.
2. **between Densmore and driveway (west of Gloria):** palms, evergreen ash, (homeless area across busway), passion vine in California walnut, ailanthus
3. **between driveway and Woodley (part of page 4):** palms, evergreen ash, passion vine on fence, ficus, oddball shrub near encelia
4. **Woodley to Valjean:** palm trees, pines, evergreen ash, eucalyptus volunteers
5. **Valjean to where vacant lot on south side ends:** lots of evergreen ash, palms, elm
6. **end of vacant lot to Hayvenhurst (part of page 7):** lots of evergreen ash, Peruvian peppers with volunteers, passion vine, maybe ailanthus, palm trees, acacia?
7. **Hayvenhurst to Bull Creek (including all of page 8 and part of page 9):** lots of evergreen ash, eucalyptus, tamarisk, ailanthus
10. **Bull Creek to Balboa:** evergreen ash adjacent to Bull Creek busway overpass, Johnson grass at east end of parking lot, palm trees in Bull Creek Project area south of Parking lot.
- R. **West of Balboa (narrow part of triangle at east end):** small evergreen ashes emerges from native shrubs all along the busway
- L. **West of Balboa (large part of triangle at west end):** ailanthus forest on west side and large ones along busway, castor bean, evergreen ash along fenceline, palms, mustard, tocalote

**Recommendations:** That all the non-native plants be removed and regular weed and non-native tree control maintenance be implemented. The proliferation of non-native invasive plants along this corridor puts additional pressure on the wildlife reserve areas in the basin, Bull Creek being adjacent and the Wildlife Reserve downstream from where Haskell Creek crosses the busway. It is to the City of Los Angeles's benefit if this corridor be maintained to eliminate non-native invasive plants.

Demerone

Palm trees  
evergreen ash  
Pine tree  
cedarling

Eucalyptus forest

Russian thistle  
patch

Ailanthus forest  
small plants < 12' h.  
pepper  
w/ many  
sprouts

elm

no  
overgrown  
ash

Lowest  
elm

elm



©2010 Google

lev 723 ft

Eye alt 2705 ft



purple sage

arbutus, ash  
palm  
passion vine, palmo  
evergreen ash

Gloria

ash on highway  
arbutus, ash, palm  
baby pine, ash, palm  
passion vine in Ca. walnut  
leaves

Blewett

palm

big evergreen ash

homeless  
area

palm,  
ash

Donismore



© 2010 Europa Technologies

© 2010 Google

lat 34.187508° lon -118.478064° elev 723 ft



Palm Grove  
Montgomery

elm

purple eggs

old wood church next to analysis  
Ficus tree (next to telephone pole)  
Caviota  
elm, pine, ash

Palm

clanathus

palm

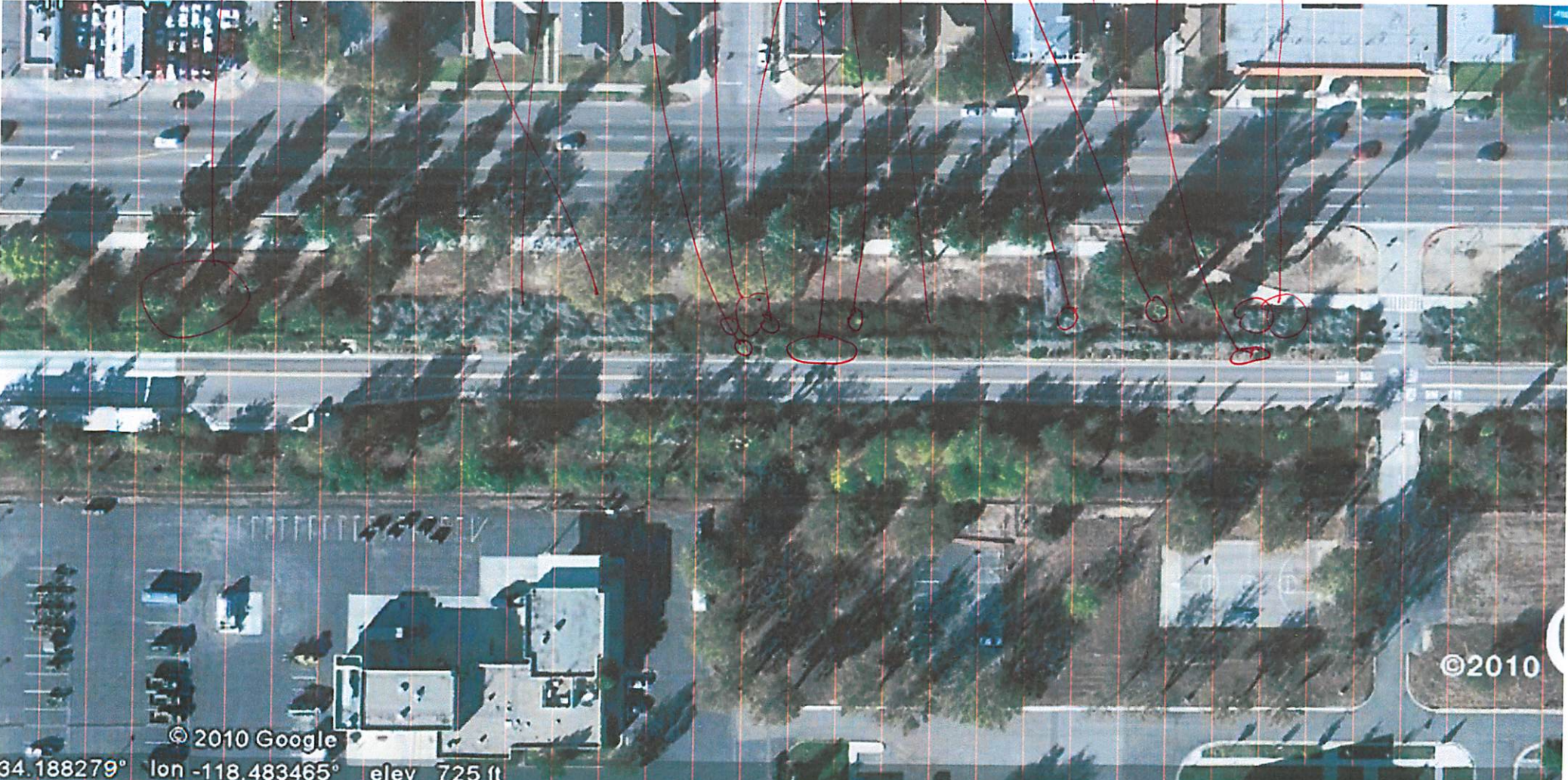
large palm  
elm tree

burn area

passion vine on fence

palm

ash







Eucalyptus  
Volunteers  
ash, palm  
palm, pine

palm tree

goshawk

ash, palms

ash

palm

WOODLEY



big evergreen  
ashes

lots of  
ash

elm  
palms  
ash

Walden ↑



©2010 Google



ash

ilanthus?

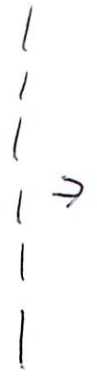
ash

camellia, ash  
Clusia

passion fruit  
small ash large ash  
lots of ash

peppers w/ volunteer

camellia?  
ash





oak

ailanthus

THREAT RISK!  
on highway

palm (2)

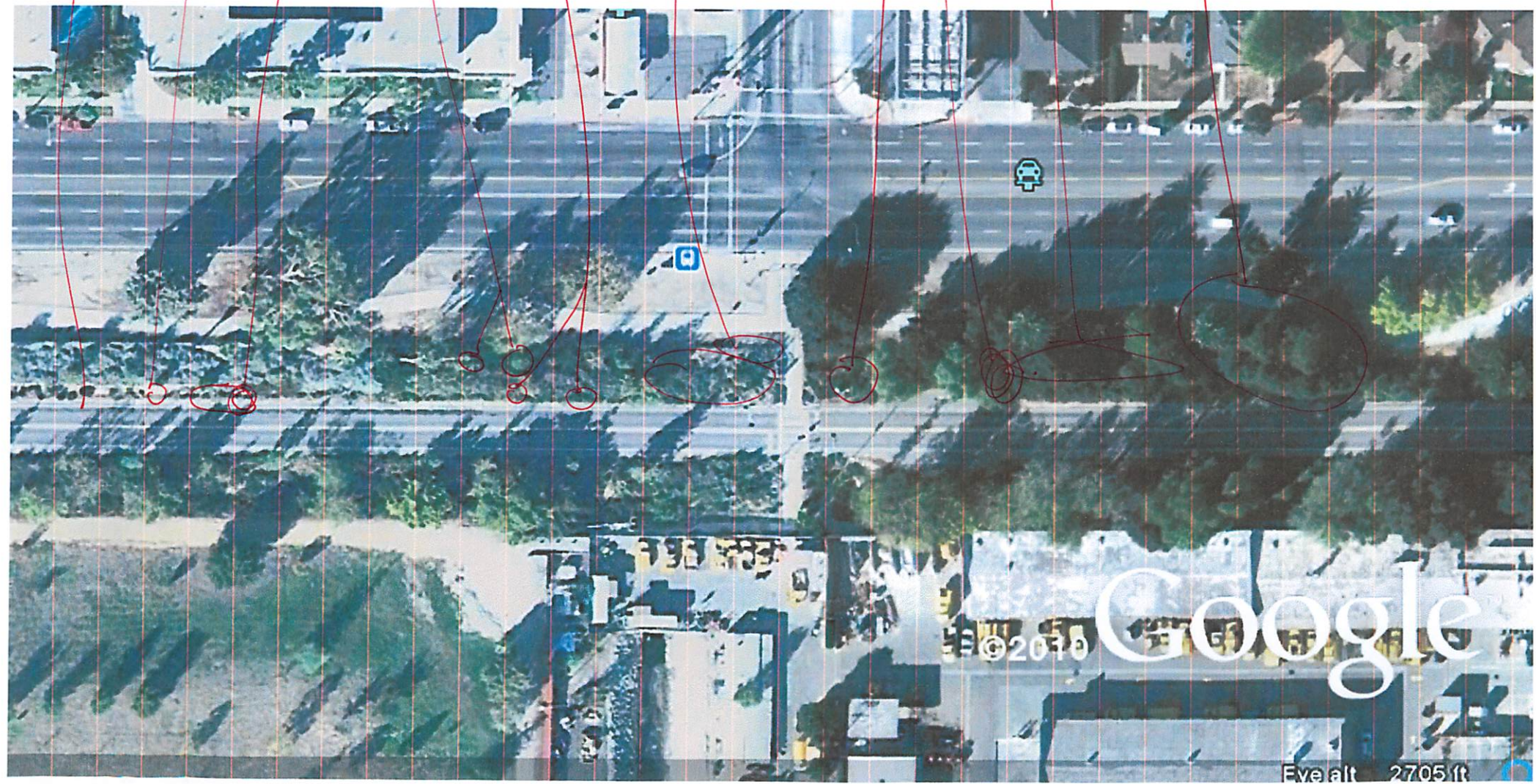
Ficus on highway

oak (in & outside  
highway)  
Haydenhurst

Palm trees  
acacia?

oak (lots)  
on MTA line also

oak  
w/oak  
volunteers





on highway 700

ash

ash .

ash



© 2010 Google

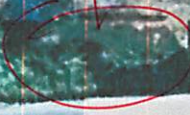
lat 34.186544° lon -118.495687° elev 721 ft



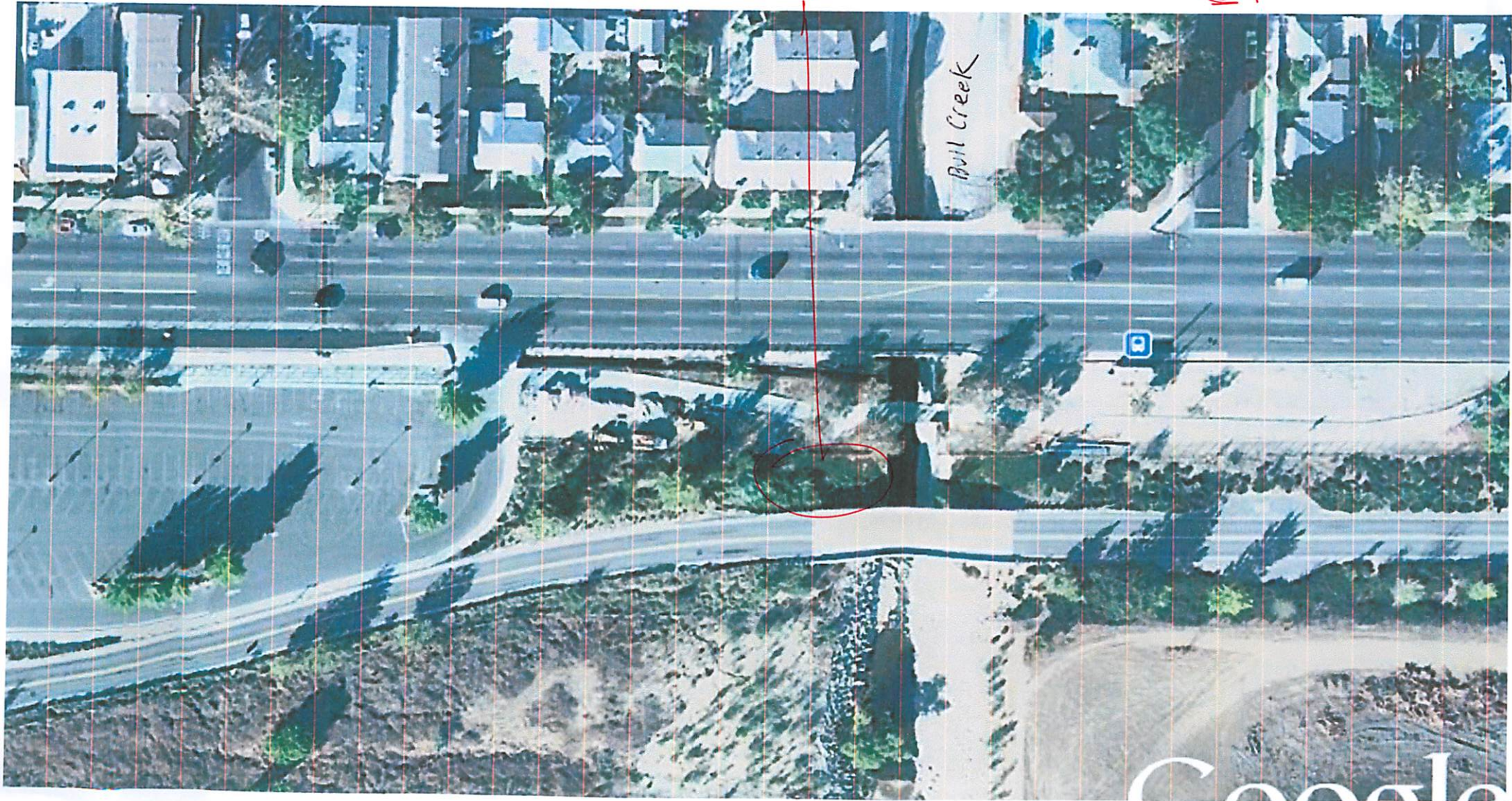
Petit

-ash

Bull Creek



Google





Balboa

See palm trees

Forkley St.  
Johnson grass





①

aulanthus

mulefat

evergreen  
ash along  
fenceline

aulanthus

mustard,  
tocalote

?

~~aulanthus~~

palm

castor bean

aulanthus





