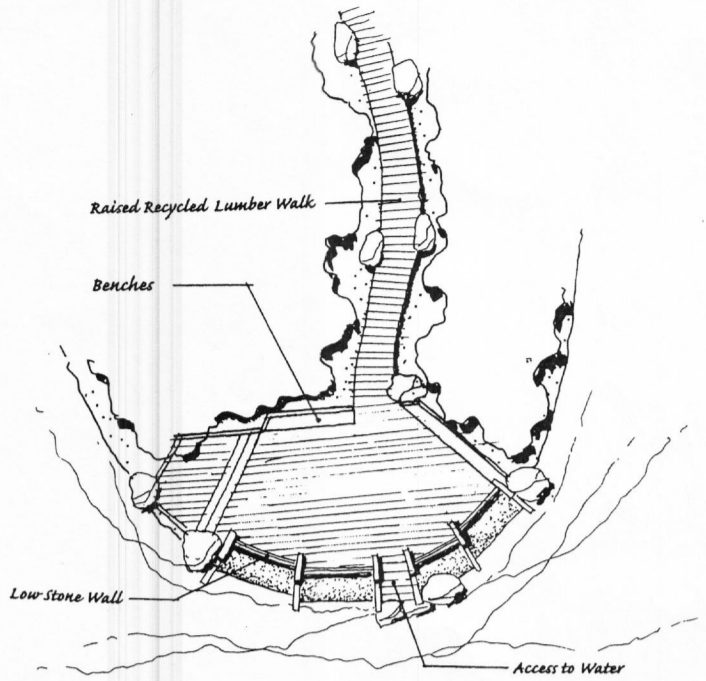
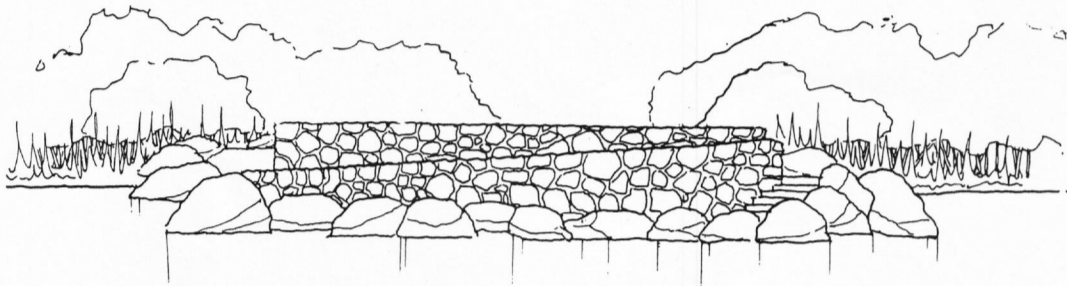


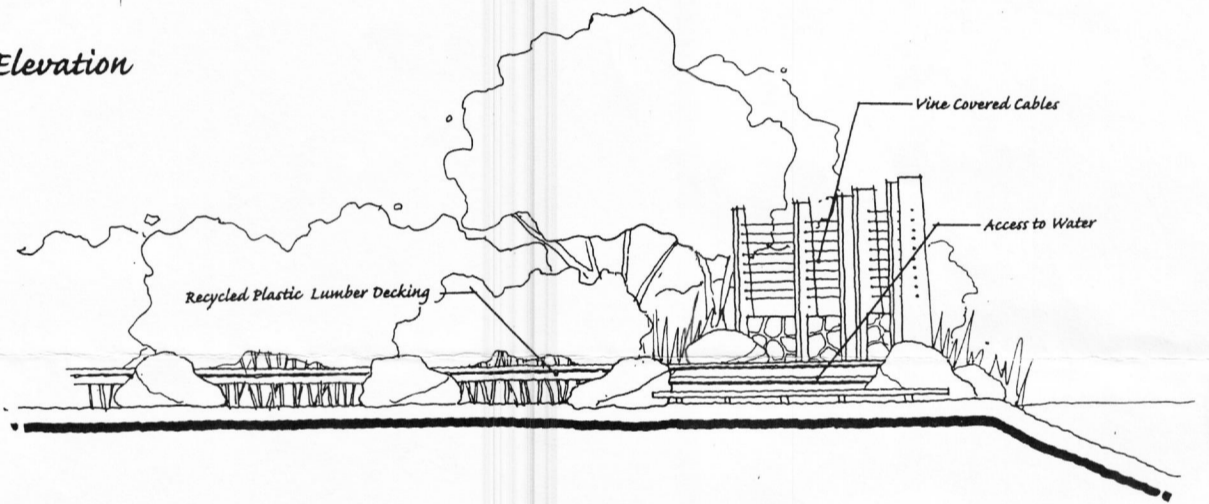
1 Viewing Area - Bird Blind Plan
1/8" = 1'-0"



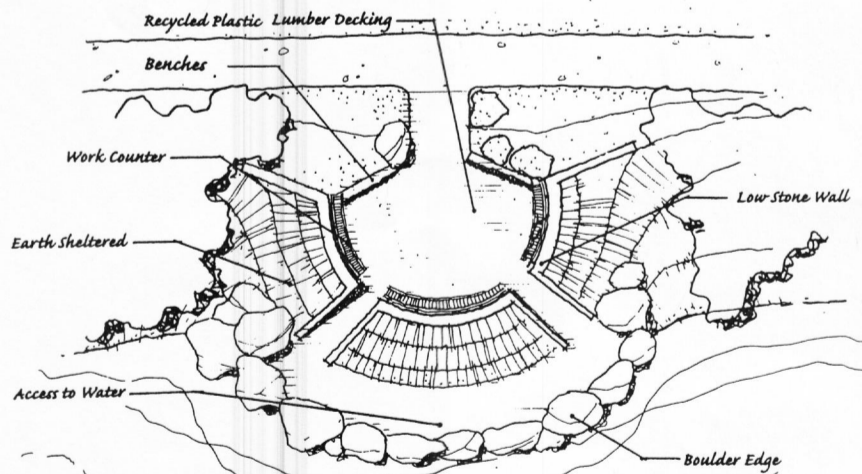
2 Viewing Area - Bird Blind Plan
1/8" = 1'-0"



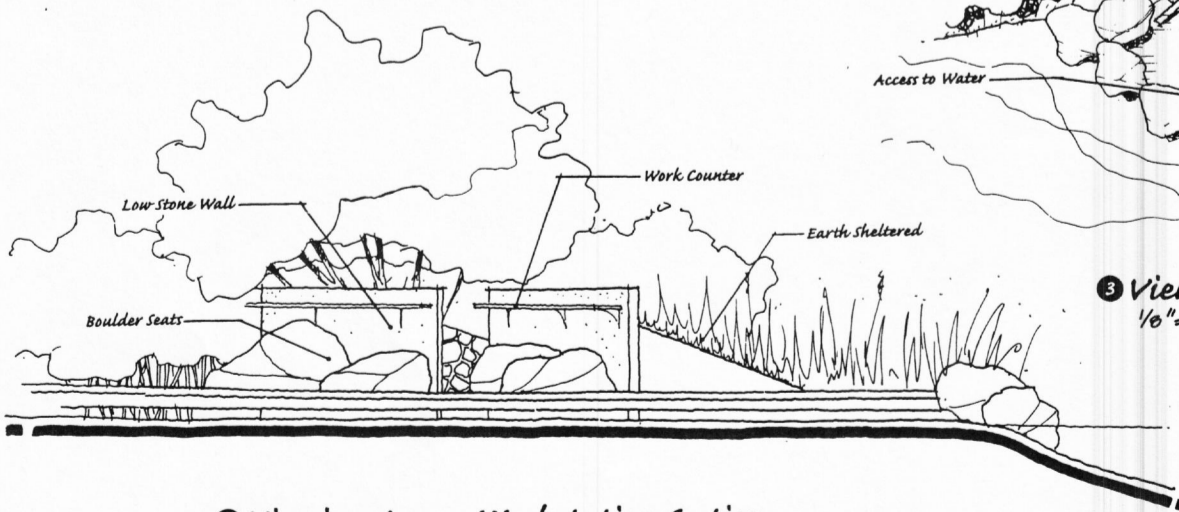
1 Viewing Area - Bird Blind Elevation
1/4" = 1'-0"



2 Viewing Area - Bird Blind Section
1/4" = 1'-0"



3 Viewing Area - Workstation Plan
1/8" = 1'-0"



3 Viewing Area - Workstation Section
1/4" = 1'-0"



Sepulveda Basin
Wildlife Park